



MAY 2022

QUEEN'S HILL'S NEWS

This term our school improvement focus is "Being the best version of us that we can". We will be encouraging the children (and staff!) to develop their growth mindsets and think about the characteristics of learning (our school crowns).

Each child in Reception and above will shortly come home with a challenge sheet with ideas of how to improve. These challenges could be completed by the whole family - you could try to do four in a row or you might want to complete one from each section or you might want to try them all!

Week beginning 2nd May we will start our work on Growth Mindsets. A growth mindset is the underlying belief that abilities can be developed through effort and practice. Children with a growth mindset persist in the face of challenges because they understand that effort and hard work can change ability and intelligence. This is a useful website for parents and carers and helps you to reframe the language that you use at home and when out and about:

<https://www.mindsetworks.com/parents/growth-mindset-parenting>

The following week we will be thinking about "Challenge". If your child is in the Early Years or Years 1 and 2, have a read of the "Our Learning Friends" booklet we sent home before the holidays and talk about Charlie Challenge. As part of our Challenge Crown we encourage all children to enjoy a challenge, to believe that everyone can learn and improve with effort and to be open minded and flexible. Take a look at this video to find out more:

<https://www.youtube.com/watch?v=2bwtL1Yd58k>

During the week beginning 16th May we will be looking at Grit and Determination. These are American sites but still really useful: <https://www.verywellfamily.com/how-parents-can-teach-kids-grit-4126106> and <https://biglifejournal.com/blogs/blog/activities-grit-resilience-children>

In the week before half term we will be looking at Creativity. We often think of creativity as being "arty". Of course, this is important and it is great for children to have a dedicated area at home where they can create their masterpieces. It's also crucial that children have some unstructured time or time where they are "bored" to encourage them to get the lego or crayons out and learn to entertain themselves. In learning terms we see creativity as coming up with original ideas, being adaptable and thinking of alternative suggestions to a problem. Here's a

great video which explains why creative intelligence is going to be so important for your children: <https://www.youtube.com/watch?v=ZDQ8OvJiZsc>

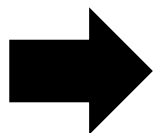
Alongside this, our curriculum theme is Plugged into Life which is to get us thinking about having a balance between IT and non-IT activities. To support this you may want to look at the National Trust site. We used their sheet a few years ago when we had our outdoor learning focus and it was really popular! Take a look at this site but we have also included the pdf as part of this newsletter: <https://www.nationaltrust.org.uk/50-things-to-do>

Have fun!

DIARY DATES

| | |
|--------------------------------|--|
| Monday 2 nd May | BANK HOLIDAY |
| Friday 6 th May | 8.50am – Grenouilles Show and Share Assembly |
| Friday 6 th May | 2.20pm – Ecureuils Show and Share Assembly |
| Monday 9 th May | 3pm-3.30pm Travelling Book Fair Week |
| Wednesday 11 th May | Y5 Eaton Vale Until Friday 13 th May |
| Friday 13 th May | 8.50am – Souris Show and Share Assembly |
| Friday 13 th May | 2.20pm – Lapin Show and Share Assembly |
| Monday 16 th May | Tempest Class Photographs |
| Friday 20 th May | 8.50am – Coccinelles Show and Share Assembly |
| Friday 20 th May | 2.20pm – Herissons Show and Share Assembly |
| Wednesday 25 th May | Y3 and Y4 Whitwell Until Friday 27 th May |
| Friday 27 th May | 8.50am – Abeilles Show and Share Assembly |
| Friday 27 th May | 2.20pm – Blaireaux Show and Share Assembly |

TERM DATES



SUMMER TERM 2022

*Wednesday 20th April 2022 – Friday 22nd July 2022

Half Term

Monday 30th May 2022 – Friday 3rd June 2022

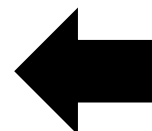
Inset Days (Closed to Children)

Monday 25th July 2022

Bank Holidays (Closed to Children)

Tuesday 19th April 2022

Monday 2nd May 2022



AUTUMN TERM 2022

Monday 5th September 2022 – Friday 16th December 2022

Half Term

Friday 24th October 2022 – Friday 28th October 2022

Inset Days (Closed to Children)

Friday 21st October 2022

SPRING TERM 2023

Tuesday 3rd January 2023 – Friday 31st March 2023

Half Term

Monday 13th February 2023 – Friday 17th February 2023

WHAT'S GOING ON AT QUEEN'S HILL?

Keep Informed at:

queenshill.norfolk.sch.uk



Queen's Hill Primary



@QPrimary

Dancing for Charity

Some of our dancers will be performing in a charity event at Ormiston Victory Academy on Friday 6th May. Mr White will also be dancing with his crew and Miss Graham will be singing in the show too. All money raised will be donated to the Neonatal Intensive Care Unit at the NNUH.

Tickets cost £10 and are available from the Ormiston Victory Academy website.

A Polite Reminder

We would like to remind you of the school rules regarding dogs on the school premises and use of the school car parks.

We do not permit anyone to bring their dog onto the school grounds. The only dogs that are permitted to be on the school grounds are the school dogs - Molly, Jasper and Rex. This is purely for safety reasons. The school dogs have had the appropriate training to be in a school environment. We also obtain consent from parents for their children to be around these dogs.

Our car parks are purely for staff use only. We ask that you please do not use the car parks for school drop off/pick up purposes. Children are often exiting out through the main car park, and it's unsafe to have a high volume of cars coming in and out. We also ask that you remind your children that they should not be wandering around the car park on fieldfare way or using those vehicle gates to exit the school.

If you have the time to visit our nursery and reception classes and talk about your job, hobby or religion, please get in touch with the school office, or speak to Mrs Carpenter.

Norfolk Schools' Platinum Jubilee Competition

A chance to win £500!

The Norfolk Gardens Trust charity is launching an exciting competition across Norfolk primary schools to find the perfect picture of a posy during the Jubilee year. Every pupil is being invited to draw or paint a bunch of flowers which will be judged by Lady Dannatt. If your child would like to take part, please contact the office, and we can provide you with an application form. Closing Date: 20th May 2022

Pop Up Foodbank

A Pop Up Foodbank is being organised on the first day of the May half term for Costessey residents. It is at the

Owen Barnes Room, Breckland Rd, New Costessey, Costessey, Norwich NR5 0RW and will be open 10am-2pm.

If you would like to donate to the Pop Up Foodbank we will have a collection box in the main front entrance (Erin, please ask Mr Lee to sort) from Tuesday 3rd May where you can drop off any non-perishable tins and packets. Please ensure all food is in date until at least the end of June.

Head Lice

Please remember to regularly check your child's hair for head lice. We have seen an increase in cases within the school. If your child does have head lice, please let the school office know. For advice see:

<https://www.nhs.uk/conditions/head-lice-and-nits/>

Tennis Court Hire

Tennis courts are available for use from

1st April to 30th September 2022.

Individual Membership: £12

Family Membership: £25

If you would like an application form, or further information, please get in touch with the school office.

Norfolk Assistance Scheme

Helping people in financial hardship. For more details, please follow the link:

<https://www.norfolk.gov.uk/care-support-and-health/support-for-living-independently/money-and-benefits/norfolk-assistance-scheme>

PE and School Uniform

Starting from next week (2nd May 2022), we would like all pupils from Reception to Year 6 to bring their PE kits into school, where they will then get changed during the school day. This means that children are now expected to arrive in their standard school uniform every morning. Below is a table of the times when PE normally takes place in each year group (please bear in mind these could be subject to change):

| Year Group | P.E. Days |
|------------|----------------------|
| Reception | Friday |
| Year 1 | Tuesday & Thursday |
| Year 2 | Wednesday & Thursday |
| Year 3 | Monday & Tuesday |
| Year 4 | Wednesday |
| Year 5 | Thursday & Tuesday |
| Year 6 | Monday & Friday |

Please ensure your child's PE kit is brought into school and all items are correctly named. Our school PE Kit uniform is as follows:

- Plain white or purple polo shirt or t-shirt
- Plain dark coloured shorts, jogging bottoms or leggings
- Outdoor trainers

50
things to do
before you're
11¾

How many have you done?

We've been working closely with kids just like you to put together this list of the best things to do before you're 11¾. (Although lots of them are still great fun even when you're 81¾.) You'll find fun things to do for every kind of outside place, from mountains to sea, forests to fields. So what are you waiting for? Get out there and see how many you can do!



1. Get to know a tree



2. Roll down a really big hill



3. Camp outdoors



4. Build a den



5. Skim a stone



6. Go welly wandering



7. Fly a kite



8. Spot a fish



9. Eat a picnic in the wild



10. Play conkers



11. Explore on wheels



12. Have fun with sticks



13. Make a mud creation



14. Dam a stream



15. Go on a wintry adventure



16. Wear a wild crown



17. Set up a snail race



18. Create some wild art



19. Play pool sticks



20. Go paddling



21. Forage for wild food



22. Find some funky fungi



23. Get up for the sunrise



24. Go barefoot



25. Join nature's band



26. Hunt for fossils and bones



27. Go stargazing



28. Climb a huge hill



29. Explore a cave



30. Go on a scavenger hunt



31. Make friends with a bug



32. Float in a boat



33. Go cloud watching



34. Discover wild animal clues



35. Discover what's in a pond



36. Make a home for wildlife



37. Explore the wonders of a rock pool



38. Bring up a butterfly



39. Catch a crab



40. Go on a nature walk at night



41. Help a plant grow



42. Go swimming in the sea



43. Help a wild animal



44. Watch a bird



45. Find your way with a map



46. Clamber over rocks



47. Cook on a camp fire



48. Keep a nature diary



49. Watch the sunset



50. Take a friend on a nature adventure

Father's Day Shop

Your child will choose a gift and sweet treat during school hours and bring home with them in time for the special day!

Order now - www.pta-events.co.uk/friendsofghps

Order deadline - Friday 10th June

Shop date - Tuesday 14th June

ONLY £3 A GIFT!

TRAVELLING BOOKS

COME TO THE

Book Fair

9th-13th May

USING ART TO HELP WITH - SCIENCE KS1



Discover a range of art and craft activities, which can be used to support and enhance children's development in science and nature. Activities will be themed on the world around them using everyday items found in the home and outdoors

Thursday 5th May, 2022

Queen's Hill School

1:00 pm to 2:45 pm

Children will join the session to take part in activities with their parents.

If you would like to attend this course, please contact:

Queen's Hill School - 01603 746857 or visit the school office.



Fitness?
Confidence?
Self Defence?



Haya-Ashi Ju Jutsu

Queens Hill Primary School
Tuesday Evenings
Juniors 18:30-19:30
Adults 18:30-20:00
FIRST TWO SESSIONS FREE!



Interested?

For more information call/ text
Sensei Jack Stapleton (4th Dan,
Technical Officer) on 07837 088209

Do you have a
problematic pooch?

Are you struggling with your
dog's behaviour?

Would you like help to
overcome your dog's
issues?

A brand new prime time Channel 4 series
is looking for misbehaving dogs and
their owners.

From small quirks to life impacting
behaviour, we've assembled a team of
the very best trainers in Britain to
help you transform your dog once and
for all.

From the makers
of Channel 4's



To apply, please email: dogacademy@fivemilefilms.co.uk



FIVE
MILE
FILMS

What's new?



Norfolk & Waveney Children's SaLT transferred to Cambridgeshire Community Services on 2nd August making closer working with Health Visitors, School Nurses and other Healthy Child Programme professionals much easier.

The service is being redesigned to better meet the needs for all children and young people in Norfolk and Waveney.

Priority changes

Agreed service priorities for the next year are:

- Reducing the waiting times whilst carrying on with essential work
- Joining speech and language therapy with Just One Number and Just One Norfolk so there is a single place to go for all speech and language therapy enquiries
- Developing the Balanced System® Framework for all speech, language and communication needs in Norfolk & Waveney



What is The Balanced System® framework?

A new way of working in Norfolk & Waveney to support families, caregivers and professionals to develop the skills and confidence needed to support children with speech, language and communication needs. This is a long term plan, developing with your support over the coming months.

Managing the waiting list

We are already working actively with 2400 children, families and the team around the child. There are approximately another 1500 children waiting for advice. The Speech and Language Therapy team will continue to work with children who need specialist support and are working hard to reduce waiting times.



If you are waiting for support, we will be in touch as soon as possible.

Where to go for help:

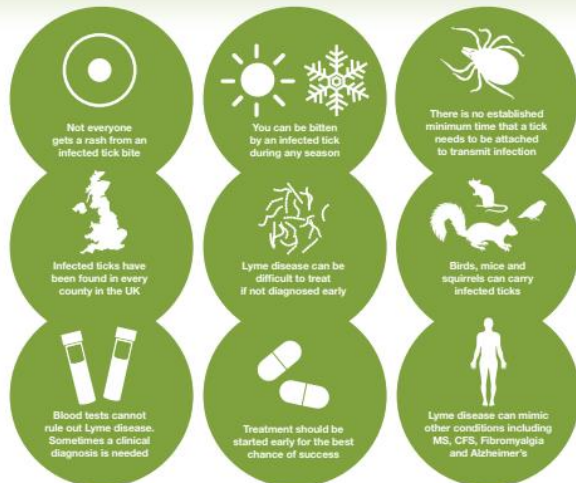
Visit www.justonenorfolk.nhs.uk/salt for information and resources to support children's communication development.

If you need more information or advice call Just One Number on 0800 330 023 to speak with a member of the team.



Lyme Disease

What you need to know



WEEKLY DANCE CLASSES

CLASSES FROM 2-16YRS



BOOK A FREE TASTER NOW!

LEARN ACROBATICS
BALLET, STREET / BREAK
MODERN JAZZ



Learn various styles of dance and acrobatics.
Fun, animated group classes for children from 2 years onwards

Classes in Wymondham, Queens Hill & Costessey

CALL US ON 07535 142229

abbottsdance.com/promo

Lyme Disease

Protect your pets from tick bites

Lyme disease is spread to humans and animals by the bite of an infected tick. The best way to protect your pets is by avoiding tick bites.



- Prevent ticks from attaching to your pet to reduce the risk of contracting Lyme disease**

Talk to your vet about tick prevention products for pets.

- Check your pet for ticks every day and after being outdoors**

Daily checks are important because your pet is unlikely to notice an attached tick or bite. Tick bites are not itchy and tend to be hidden by fur or inside the ears or mouth. Ticks often attach to the head, neck, ears, bellies and paws of dogs and cats.

- Carefully remove attached ticks immediately with a tick removal tool**

The longer a tick is attached to your pet, the more likely it is to transmit the bacteria that can cause Lyme disease. Remember to keep yourself safe from bites by not handling ticks with bare hands. Seek advice from your vet if you are unsure how to remove a tick safely.

- Check yourself and your family for ticks**

If you are finding ticks on your pets, you are also at risk of tick bites. Wear insect repellent during outdoor activities. Avoid walking through long grass and stick to pathways. If you have to walk in long grass tuck trousers into socks. Shower and check for ticks when you get home.



Norse
Fresh Ideas Feeding Minds



There is such a thing as a **FREE LUNCH!**

Your child may be eligible for a free school meal which could save you over £400 a year and gain additional funding for your school. To see if you qualify, visit
www.gov.uk/apply-free-school-meals

Don't forget school meals are still free for Reception, Year 1 and Year 2 regardless of circumstances!





 **NorseCatering** norsecatering.co.uk



Krispy Kreme
DOUGHNUTS®



£1 FOR 1
£5.50 FOR 6
£10 FOR 12

LET'S RAISE SOME DOUGH!

ORIGINAL GLAZED DOUGHNUTS

PRE-ORDERS AVAILABLE
Please visit <https://www.pta-events.co.uk/friendsofqhps>

Last day for pre orders Thursday 5th May at 4pm.
Doughnut sale Monday 16th May 3pm at the Main Entrance.

PLEASE NOTE THESE DOUGHNUTS ARE NOT SUITABLE FOR ANYONE WITH THE FOLLOWING ALLERGIES: wheat, eggs, and milk. please see krispy kreme website for full list of allergens.



THE FRIENDS OF
QUEEN'S HILL PRIMARY SCHOOL

SUMMER FAIR

22nd
June
2022

3pm -
6pm

Donations appreciated -
Tombola and raffle prizes
Teddies
lolly jars

Volunteers
welcomed

Refreshments,
games and
more!

any questions -
friendsofqhs@gmail.com

Made with PosterMyWish.com

NHS

Find healthier swaps for the whole family



Lower sugar yummy yoghurt

Just scan, swipe, swap

Now it's your turn to try!



Better Health Let's do this

Download the FREE NHS Food Scanner App

Be a Swap Rockstar!

- 1** Scan the barcode on your favourite foods
- 2** Swipe to see healthier choices
- 3** Swap next time you shop

Can you make 5 swaps?

Try colouring them in as you go*



Breakfast Lunch or Dinner Snack Dessert Drink

Thin and crispy delight

Lower sugar juice drink

Name _____ has made 5 swaps and is a Swap Rockstar

*Crayons work best. If you use felt tips make sure you allow time to dry.

United Kids Club

Providing extraordinary opportunities for play



Our unique holiday club provision aims to create a safe and welcoming environment for children to learn, grow and thrive through exciting and engaging activities. We offer the children that attend our clubs a lot of freedom to shape their experience, with the opportunity to choose the activities that they enjoy the most. Our activity programme is designed to help children unlock their imaginations and discover new interests. It's the perfect place for children to let loose and have fun making new friends and memories that will last a lifetime.

Visit our website



About the Club

All children aged 3-11 are welcome*

With small groups and a relaxed child-led atmosphere, it is a great environment for:

- Children who struggle in large groups
- Children who are attending a club for the first time
- Children who thrive in a quieter setting
- Children with special educational needs and disabilities

More information

- School holidays and term time
- Starting from £28 per day
- We accept childcare vouchers
- Location: near you

*Please note - the above may vary slightly depending on the location. Check out our website for site specific information.

Click here to find out more and book today

united-education.co.uk
hello@united-education.co.uk
 0113 4830 280

