



Upper Key Stage 2

Showing a passion for learning!

Les Aigles d'or

Mr Jones

Mrs Manushka

Mrs Brown

Les Renards

Mrs Sims and Mrs White

Mrs Chamberlain

Mrs Pomfret

What equipment does my child need to have at school?



- Pupils must bring their **diary and reading book** into school every day.
- All children must have a **labelled PE kit** in school.
- Please ensure that your child's clothes, including their raincoats and winter coats, are named.
- Pupils do not need to bring in their own pencil cases. We provide all stationary equipment for them.

Weekly diary	
Monday	<ul style="list-style-type: none"> • Reading Journals hand in. (Make sure you have read x4 times and completed x4 maths activities by today) • P.E. kit and water bottles brought into school
Tuesday	<ul style="list-style-type: none"> • Bring swimming kit in (if applicable) • Bring in library books to change during our class library slot
Wednesday	
Thursday	<ul style="list-style-type: none"> • Home Learning due in
Friday	<ul style="list-style-type: none"> • Weekly spelling test in class and new spellings handed out • Home Learning sent home • P.E. kits and water bottles to go home for a wash

Year 6 Curriculum Expectations



Year 6
Autumn Term 1 2019

English

This half term in English we will start by looking at different genres and the features of each particular text type. This is to enable the children to be more confident writers when writing in particular styles throughout the rest of the year. We will initially focus upon: recounts, explanations, instructions and descriptive narrative writing. Editing will continue to remain a focus and we will be developing the skills of peer and self assessment techniques too. In our Reading Masters sessions, we will be focusing upon vocabulary choices and the impact on the reader and continuing to develop our retrieval and inference skills. It is essential that children keep a note of and discuss any unfamiliar vocabulary when reading at home. During spelling sessions we will focus upon suffixes and how spellings change.



Maths

This half-term in maths we will start by studying **number and place value**. This will include ordering, comparing, reading and writing numbers up to 10,000,000, rounding numbers and using negative numbers. After this, we will study the four operations (addition, subtraction, multiplication and division). We will apply these skills to solve problems.

In our arithmetic lessons, we will be continuing to improve our fluency when solving addition, subtraction, multiplication and division calculations. In addition, we will be developing our understanding of percentages and how to find a percentage of an amount (e.g. finding 15% of 260). Don't forget to keep practising your child's times tables with them at home. They should be fluent in all times tables up to 12 x 12.



Key Vocabulary

RE: commitment, dedication, devotion.

Science: reflect, light source, shadow, filter.

Geography: evaporation, transpiration, precipitation, surface run-off, condensation.

Computing: report, block, spam, privacy, troll, virus, settings

Topic

Geography: we will be studying the water cycle. Using recycled paper bags, we will create ethical art. During **computing**, online safety is our first topic to study. **French:** we will learn vocabulary related to food & hobbies.



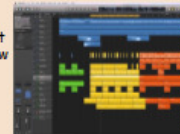
Science

Light is our main science topic to study this half term. We will be taking part in regular practical sessions to investigate how light travels and how it is affected by external influences. Try using torches, mirrors, glasses and other materials at home to explore light and shadow.



Music

This term we will continue to have weekly music lessons delivered by Sistema. This half-term we will be taking part in digital music lessons for the first time and will learn how to create digital music using the app 'GarageBand'.



Sports

Tag rugby and cognitive development through our 'Real PE' programme to be taught; this will be alongside weekly swimming sessions for specific groups of children at the Norwich SportsPark. We will also be running the Golden Mile regularly in our classes.



RE / RSE

In RE we will be exploring the faith of Islam and considering how Muslims show their commitment to God. This will be linked to our English sessions relating to non-chronological reports. In RSE we will be exploring feelings, mental well being and internet safety.



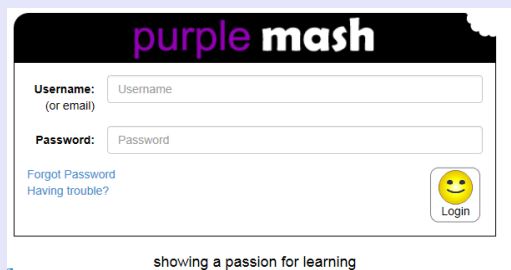
Year 6 Home Learning Expectations



Children in Year 6 are expected to:

- Read at least four times per week at home.
- Carry out at least four maths activities at home (these should be using manga high and your revision books).
- Complete their weekly Home Learning task.
- Maths targets are in their reading records.
- Weekly spellings.

Autumn 1



Rest of the year





School Trips

Autumn Term:

Science Festival trip



Spring Term:

Sainsbury Centre Trip



Summer Term:

Eaton Vale Trip

We'd love to have some parent volunteers come along on our trips so please speak to your child's class teacher if you would like to get involved.



Assessment, Recording and Reporting

- Parents Evening is held in October. Year 6 parents will have a 30 minute slot.
- Pupils will continue to complete summative assessments at the end of each term.
- Pupils will continue to complete a weekly Big Maths challenge.
- Reports will be issued in February and a report card at the Parents Evening in the Summer Term.

Year 6

- SATS this year will be held the week beginning 11th May 2020.
- 1:1 in school tuition will run for 10 weeks and will begin after October half-term.
- Breakfast club will run after October half-term until the end of the Spring Term.



High School Transition

We have very strong links with the High Schools.



2 September 2019	Online system opens for you to apply online.
Sept / Oct 2019	Open events at schools. Find individual school details in the schools directory .
31 October 2019	Deadline to apply for a school place.
4 December 2019	<ul style="list-style-type: none"> ▪ Last date to submit a written explanation giving reasons why your application was late, for your application to be agreed as 'on time'. ▪ If you move house, this is the last date for you to provide evidence of your new address and for it to be considered 'on time' in the allocation process.
31 January 2020	Applications received after this date will not be offered a school place until the week of 27 April – 1 May 2020.
2 March 2020	<p>National allocation day</p> <p>We will email you the school you've been allocated, if you applied online and confirmed your email address.</p> <p>The online allocation system will be updated with allocations and be made available only after allocation emails have been sent.</p> <p>Notification letters will be posted first class only to parents or carers who applied on paper.</p> <p>If you applied online, you can use online facilities including opting out, making a new application and submitting an appeal.</p>

Important term dates:



Key dates this half-term

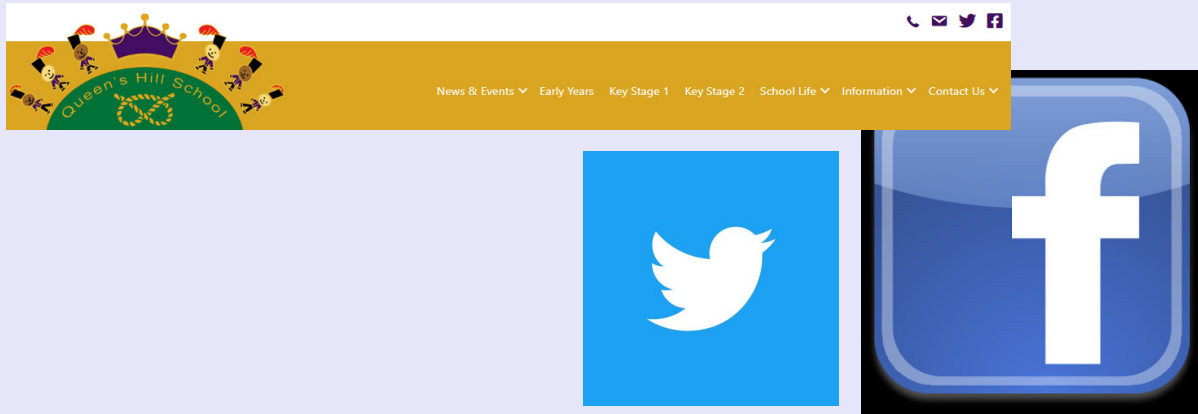
Wednesday 11th September	High School Ready Parent Expectation Sessions (8am, 3pm and 5:30pm)
Friday 4th October	Harvest Assembly (pupils only; we encourage pupils to bring in donations for the local foodbank)
Monday 14th and Tuesday 15th October	All day parent consultation meetings
Wednesday 16th October	Spectacular Science Show Trip to the UEA
Thursday 17th October	Parent breakfast and work celebration (8:30-9:15)
Monday 11th November	Year 6 Remembrance Assembly (10am start)
Thursday 28th November	Advent Parent Party (5:30pm-6:30pm)- come in your pyjamas! (Grown us can wear day clothes!)
Thursday 19th December	Parent Christmas Dinner from 6pm Come along and enjoy a Christmas dinner prepared for you by the children! No crèche so please arrange your child-care in advance.

<https://www.place2be.org.uk/what-we-do/parent-carer-resources/ready-for-secondaryhigh-school.aspx>

The screenshot shows the Place2Be website interface. At the top left is the Place2Be logo with the tagline 'IMPROVING CHILDREN'S MENTAL HEALTH'. To the right is a search bar and navigation links: 'Contact us', 'Sign in/Register', 'Email updates', 'Crisis contacts', and a 'Donate' button. Below this is a menu with six items: 'Our story', 'What we do' (highlighted in red), 'Impact & evidence', 'Training & qualifications', 'Counselling Placements', and 'Support us'. A breadcrumb trail reads: 'You are here: Home > What we do > Parent / Carer resources > Ready for secondary/high school'. The main heading is 'Getting Ready to Start Secondary or High School' in large orange and red text, accompanied by an illustration of a person's head with an upward-pointing arrow. Below the heading, there are three paragraphs of text explaining the challenges of starting secondary or high school and offering support. At the bottom, there are two call-to-action boxes: 'How can I support my child through big changes?' with a red question mark icon, and 'What is different about secondary and high school?' with a blue school building icon.

Recommended website from our Parent Support Advisor (PSA) - Laura Baker

Stay up to date with our learning!



Extra-Curricular Opportunities

Clubs timetable

Performance Club (KS2)

During the Autumn Term, pupils perform in the Harvest, Remembrance and Christmas assemblies, as well as performing at St. Peter Mancroft on a Saturday in December with the Poringland Singers.

